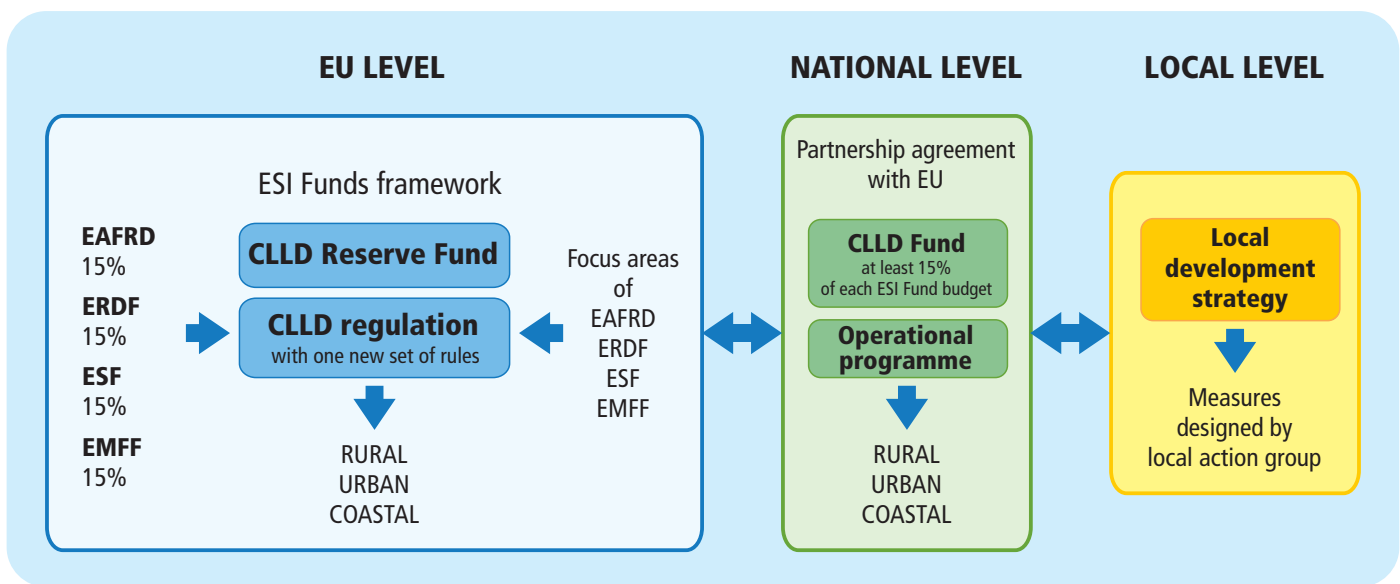


Position of European LEADER Association for Rural Development Renewing LEADER/CLLD for 2021-2027 programming period

Confirmed by ELARD General Assembly on 23.11.2017
and directed to further negotiations with European institutions and Member States.

European LEADER Association for Rural Development according to the **Tartu declaration on LEADER/CLLD implementation for programming period 2021-2027** and **Exploratory opinion on CLLD for 2021-2027** developed by European Economic and Social Committee proposes following LEADER/CLLD implementation model for 2021-2027 programming period:



MESSAGES:

1. CLLD multi-funds implementation has to be mandatory **in all Member States in all types of territories: rural, urban and coastal**.
2. In order to achieve better cohesion of territories and different funds, we urge European Commission to explore and analyse in depth opportunities to create a **Reserve Fund for CLLD** at EU level. Irrespective of this, the European Commission will have to ensure that all Member States have a **national CLLD Fund with contributions from all 4 ESI Funds** (EAFRD, ERDF, ESF and EMFF).
3. CLLD as reinforced LEADER method gives Member States unique possibility to develop their territories in a more inclusive, sustainable and integrative way. In order to achieve greater impact, enough financial means have to be foreseen for CLLD for the period 2021-2027. To do so we urge European Commission to set up requirement for Member States to allocate from each **ESI Fund budget at least 15% for CLLD Fund**, which must be supported by **sufficient national resources**. CLLD implementation in urban areas should not harm or diminish anyhow the CLLD implementation and budget in rural and coastal areas.
4. To reach to the remarkable simplification, **CLLD regulation** has to be worked out at EU level with **one set of rules**. Implementation at national level has to work under **national CLLD operational programme**, which will be coordinated by **one Managing Authority**.
5. Local Development Strategies will be implemented by measures designed **by local action groups at local level**.

This proposed implementation model takes also into account:

Cork 2.0 declaration and its' action plan, European Countryside Movement Rural Agenda, European Rural Manifesto and Venhorst declaration, analysis of surveys and collected case studies in the field of LEADER/CLLD done by European LEADER Association for Rural Development and European Network for Rural Development in 2016-2017.